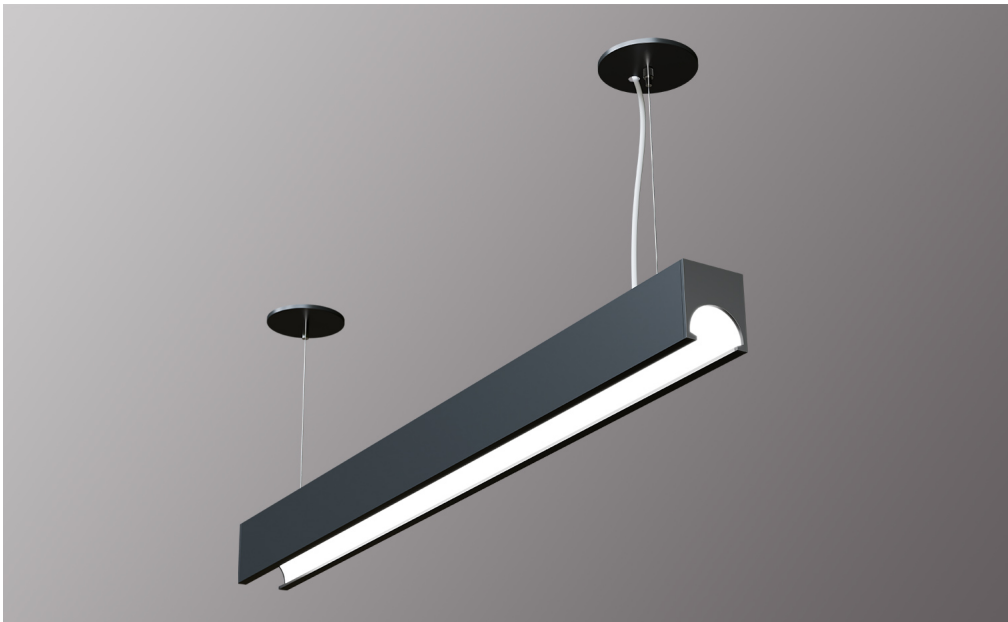


Project:	Type:
	Comments:



Highlights

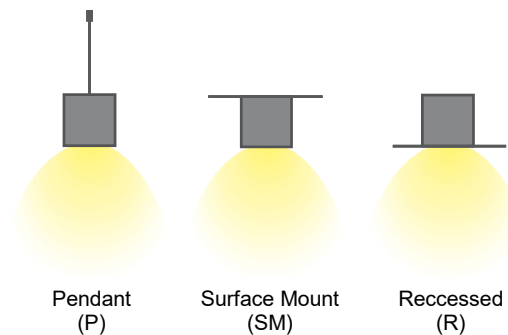
Indoor Architectural LED Fixture. Concave Shape with Concealed Illumination, Anti-glare Nano Technology Reflector. Pendant, Surface Mount and Recessed Installation. 50,000 hour rated lifespan @L80.

LED: Samsung LED Chips, 2700-5000K, Dynamic White and RGBW Available, 80CRI (90 optional)

Optical: Direct & Direct/Indirect Configurations, 121° Beam Angle, UGR<19

Construction: High Grade Aluminum Extrusion, Die Cast End Caps, Nano-Technology Reflector, Integral Driver, Powder Coat Finish. Seamless Continuous Linear Runs Available, Damp Location.

Installation



Project:	Type:
	Comments:

Ordering Guide:

Select one option from each group below. For a custom preference please contact sales@techoled.com

1-FIXTURE ID		2-DISTRIBUTION		3-LENGTH		4-LUMEN OUTPUT	
CO	Concave	D	Direct	4	4'	ME	Medium
		DI	Direct/Indirect	8	8'		
		DI2	D/I2-circuit	C	Custom		

5-COLOR TEMP.		6-VOLTAGE		7-FINISH		8-MOUNTING	
27	2700K	U	100-277V	S	Silver	P	Pendant
30	3000K	HV	347V	W	White	SM	Surface Mount
35	3500K			B	Black		
40	4000K			C	Custom (RAL#)		
50	5000K						
DT	Lutron T-series						
RGB	RGB						
RGBW	RGBW						
D	Tunable White						

9-DRIVER OPTIONS		10-OPTIONS		11-OPTIONS (CONT.)	
DM	0-10V Dimming	RF-D	Remote Tunable (RF only)	EM	EM - Battery (remote)
2C	2 Channel	RF-R	Remote RGB/W (RF only)	X	None
DM1%	1% Dimming	M	Motion Sensor (remote)		
LT1	LDE1 Lutron 1%	BM	BubblyNet BT Mesh		
DA	Dali	CS	Casambi		
DMX	DMX	AWN	Lutron Athena Node		
TR	Triac Dimming	AWNS	Lutron Athena Node sensor		
RF	RF Wireless	NL-ES7	nLight - Wired		
X	None	NL-AIR	nLight - AIR		
		NL-M	nLight - Module only		
		X	None		

Project:	Type:
	Comments:

Lumen Output Details

Model #	Length	Output	Distribution	Lumen Output
TECHOLED-CO-D-4-ME-30-U-W-P-DM	4'	Medium	Direct	3400Lm
TECHOLED-CO-D-8-ME-30-U-W-P-DM	8'	Medium	Direct	6800Lm
TECHOLED-CO-DI-4-ME-30-U-W-P-DM	4'	Medium	Direct/Indirect	3400Lm down/1100Lm up
TECHOLED-CO-DI-8-ME-30-U-W-P-DM	8'	Medium	Direct/Indirect	6700Lm down/2300Lm up

Performance above applies to 90 CRI, 3000K. Calculate 96% for 2700K, 104% for 3500K and 109% for 4000K

Project:	Type:
	Comments:

Driver Option Details

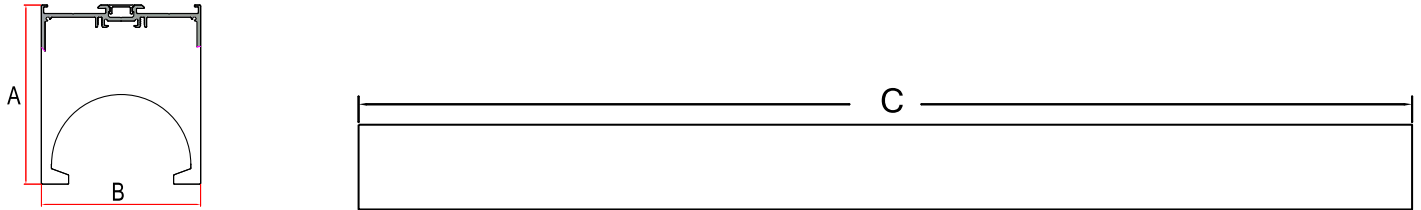
Code	Description
LT1	LDE1 -Lutron Hi-lume 1% EcoSystem, Soft-on, Fade-to Black Dimming
DA	DALI
DMX	DMX - Decoder provided by TechoLED, controller by others

Controls Details

Code	Description
RF-D	RF Wireless remote controller for tunable white. Default for tunable white.
RF-R	RF Wireless remote controller for RGB & RGBW. Default for RGB & RGBW.
M	Motion Sensor - remote, for integral sensor consult factory
BM	Bluetooth Mesh Smart Wireless Control by BubblyNet
CS	Bluetooth Mesh Smart Wireless Control by Casambi
AWNRR	Lutron Athena wireless node
AWNS	Lutron Athena wireless node with sensor
NL-ES7	Acuity nLight – Wired nES7 sensor
NL-AIR	Acuity nLight – AIR wireless rES7 sensor
NL-M	Acuity nLight - ready, sensor by others

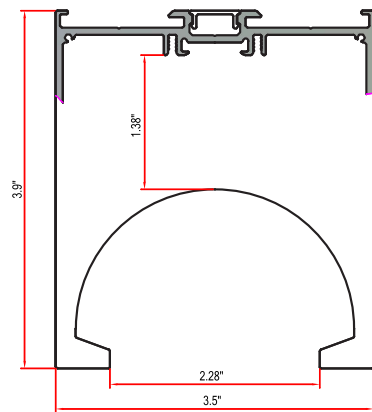
Project:	Type:
	Comments:

Dimensions



FIXTURE ID	A	B	C
TechoLED-CO-D-4-ME-30-U-W-P-DM	3.9"	3.5"	48.5"
TechoLED-CO-D-8-ME-30-U-W-P-DM	3.9"	3.5"	96.49"
TechoLED-CO-DI-4-ME-30-U-W-P-DM	3.9"	3.5"	48.5"
TechoLED-CO-DI-8-ME-30-U-W-P-DM	3.9"	3.5"	96.49"

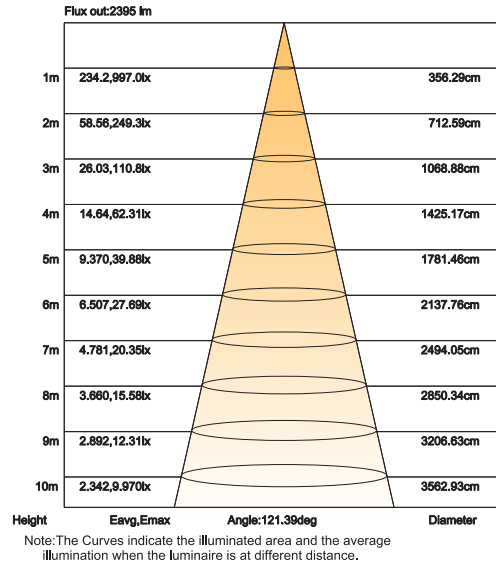
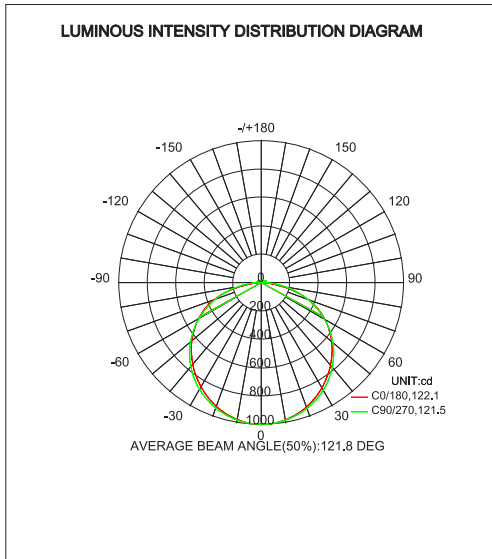
Extrusion Detail



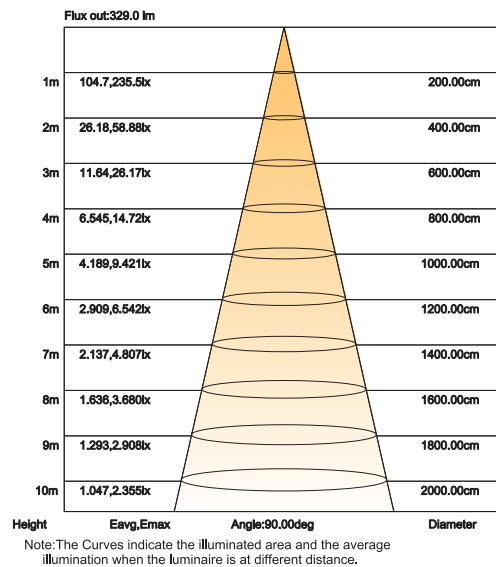
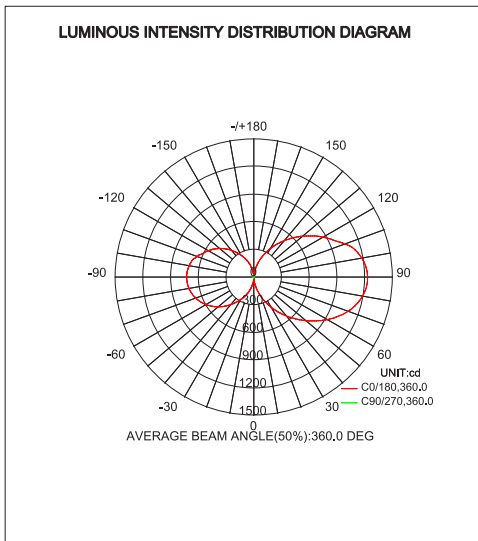
Project:	Type:
	Comments:

Photometrics

Direct Distribution



Direct/Indirect Distribution



Project:	Type:
	Comments:

Photo Details

