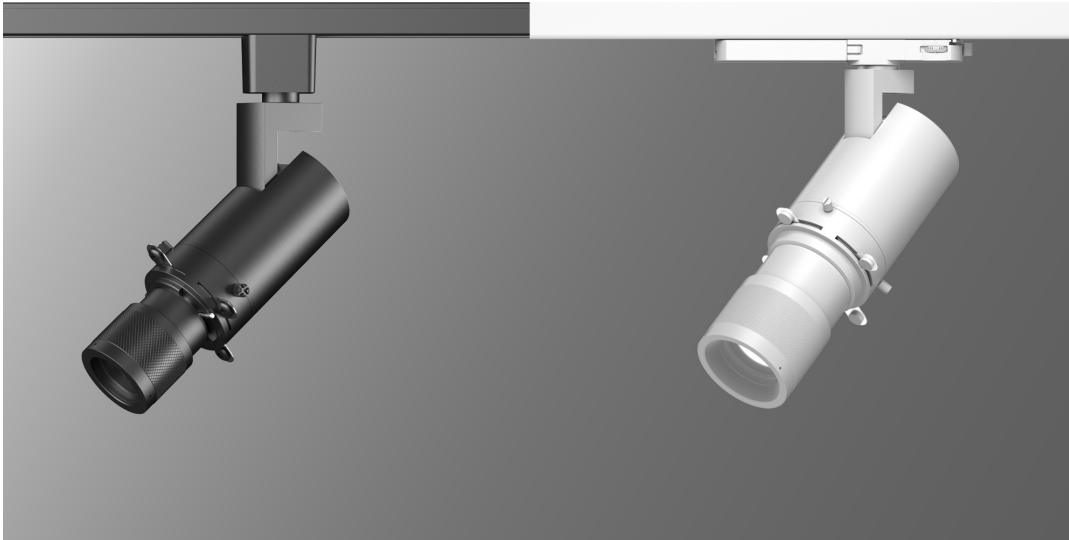


Project:	Type:
	Comments:



### Highlights

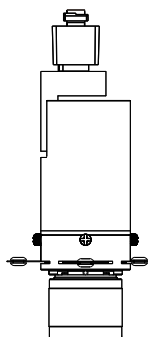
The TechoLED FramePro Projector is a specification grade framing projector designed for precise beam shaping and accent lighting. With adjustable framing shutters, iris diaphragm, high-quality optics, and clean edge definition, FramePro is ideal for highlighting artwork, displays, architectural details, and focal points. A refined and flexible projector solution for modern commercial, hospitality, retail, gallery, and residential applications.

**LED:** Cree LED Chips, 2700-4000K, 95+ CRI

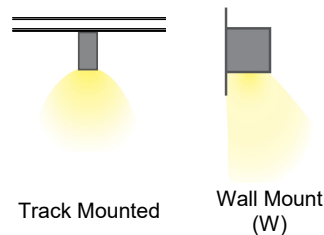
**Optical:** Direct illumination, 3°-45° beam angles (field adjustable), framing shutters, iris diaphragm

**Construction:** 100-120V input voltage. High-grade die cast aluminum, powder coat finish, custom finishes available, TRIAC dimming

### Cross Section



### Installation



Project:	Type:
	Comments:

### Configuration Example

Model #	Lumen Output	Beam Angle	Color Temp.	Finish	Mounting
TECHOLED-XP-ME-ADJ-30-B-H	Medium	Adjustable	3000K	Black	Halo

### Ordering Guide:

Select one option from each group below. For a custom preference please contact [sales@techoled.com](mailto:sales@techoled.com)

1-FIXTURE ID		2-LUMEN OUTPUT		3-BEAM ANGLE		4-COLOR TEMPERATURE	
<b>XP</b>	X - PROJECTOR	<b>LO</b>	Low	<b>ADJ</b>	Adjustable (20°-40°)	<b>27</b>	2700K
		<b>ME</b>	Medium			<b>30</b>	3000K
		<b>HI</b>	High			<b>35</b>	3500K
						<b>40</b>	4000K
						<b>50</b>	5000K

5-FINISH		6-MOUNTING		7-OPTIONS	
<b>B</b>	Black	<b>H</b>	Halo *	<b>G</b>	Gobo insert
<b>W</b>	White	<b>J</b>	Juno *	<b>C</b>	Color filter insert
<b>C</b>	Custom (RAL#)	<b>L</b>	Lightolier *		
		<b>T</b>	TEK *		
		<b>HT</b>	HTEK *		
		<b>G</b>	Global *		
		<b>W</b>	Wall Mount		

Project:	Type:
	Comments:

### Fixture ID Details

Code	Description
XP	X Series - Projector

### Lumen Output Details

Model #	Output	Beam Angle	Color Temp.	Wattage	Lumen Output
TECHOLED-XP-ME-ADJ-30-B-H	Medium	Adjustable	3000K	10W	404Lm
TECHOLED-XP-HI-ADJ-30-B-H	High	Adjustable	3000K	20W	805Lm

Performance above applies to 90CRI, 3000K. Calculate 96% for 2700K, 104% for 3500K and 109% for 4000K.

### Performance

Output	LPW
Medium	40
High	40

### Beam Angle Details

Code	Description
ADJ	3°- 45° field adjustable

### Mounting Details

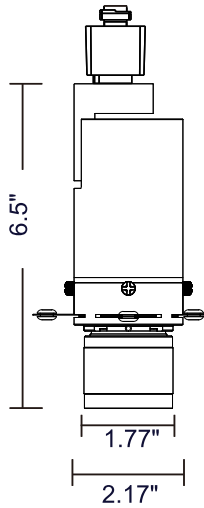
Code	Description
H	Halo (single circuit)
J	Juno (single circuit)
L	Lightolier (single circuit)
T	TEK (2circuit)
HT	HTEK (2 circuit)
G	G - Global (3 circuit)
W	Wall Mounted

Project:	Type:
	Comments:

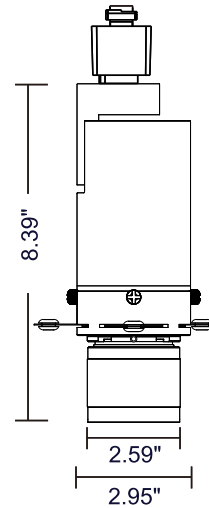
**Dimension and Mounting**

**Track Mounted**

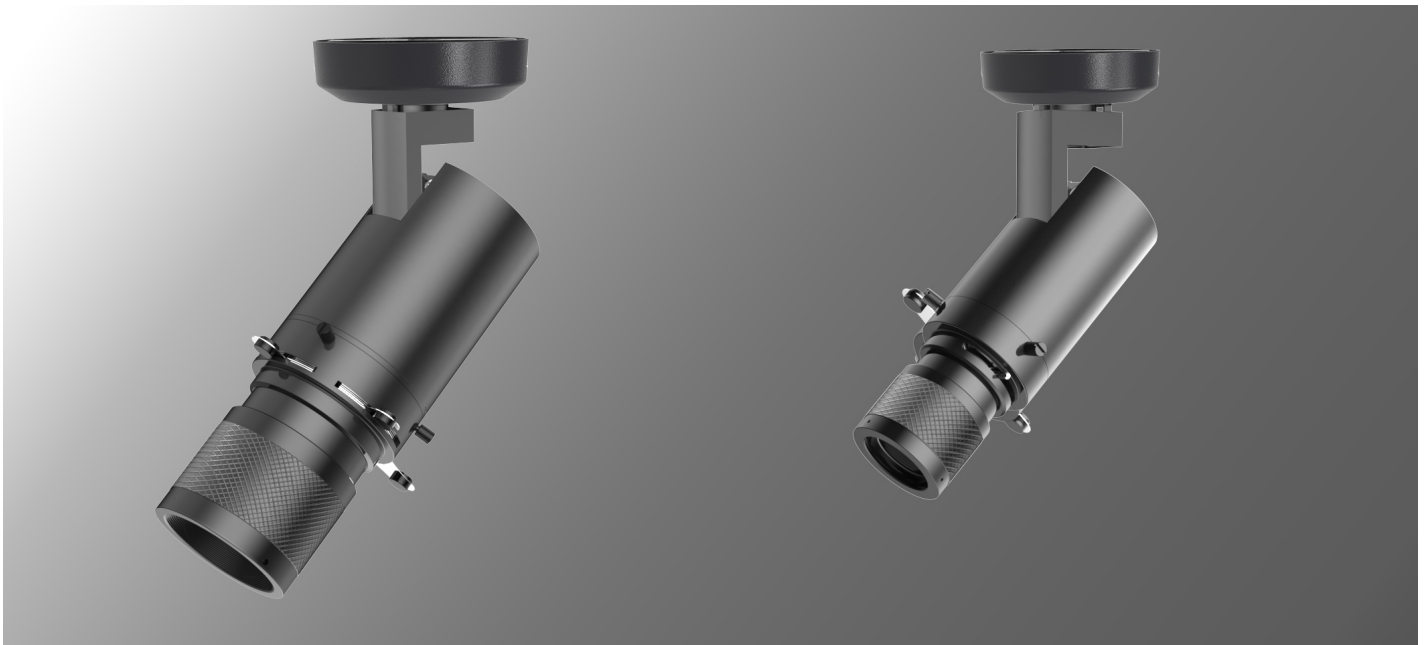
**10W Model**



**20W Model**



**Surface / monopoint installation**



Project:	Type:
	Comments:

**Operating Details**



Project:	Type:
	Comments:

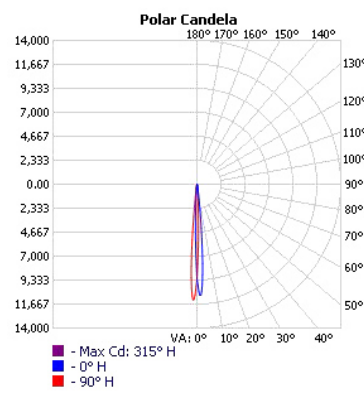
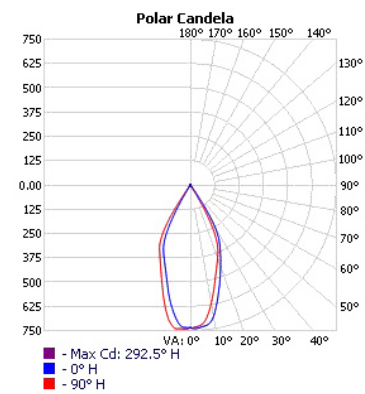
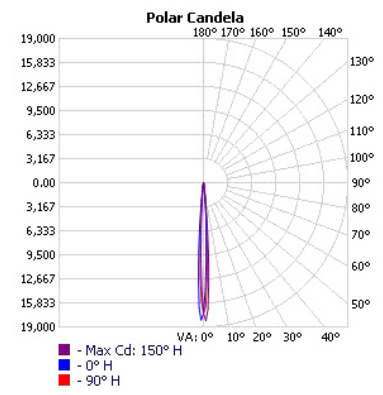
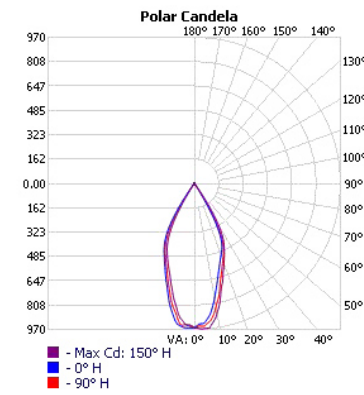
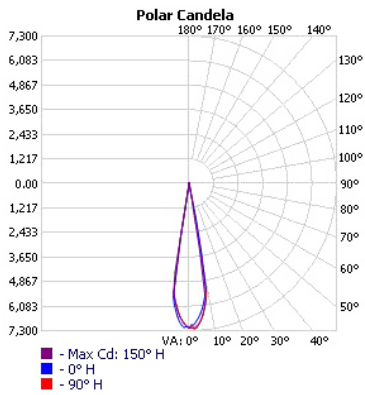
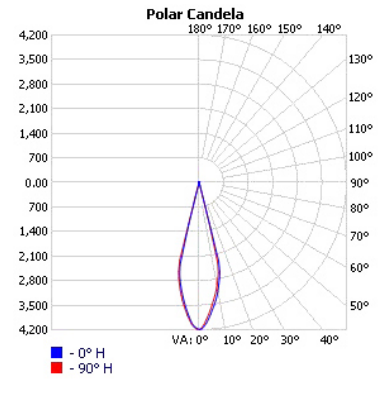
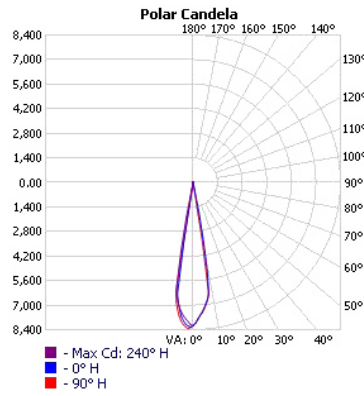
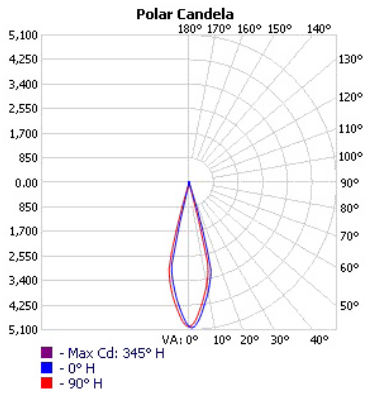
**Operating Details - continued**

- **Gobo & color filter insert (consult factory)**



Project:	Type:
Comments:	

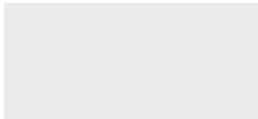
### Photometrics



Project:	Type:
	Comments:

### Finish Details (powder coat finish)

#### ■ Standard Colors



W – White



S – Silver



B – Black

#### ■ Custom Colors



RAL 1003



RAL 2004



RAL 3000



RAL 4001



RAL 5002



RAL 6000



RAL 6038



RAL 7001



RAL 1036



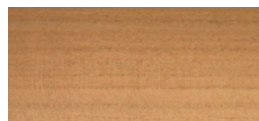
RAL 8029

Any RAL color available, please refer to [ralcolorchart.com](http://ralcolorchart.com)

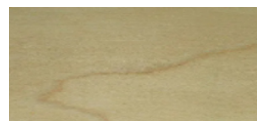
#### ■ Custom Wooden Colors



American Walnut



Cherry



Maple



Light Oak



Palisander Santos

Project:	Type:
	Comments:

 **Color Temperature**

 **Color Temperature**

